



yes we can

SUPPORT SCHREIBER DURING THE EXTRA GIVE

Join the
**SCHREIBER
PARTY at DipCo
with FM97**

THE **EXTRA**
ORDINARY
GIVE



Rodgers & Associates
A COMMUNITY SPECIALIST



NOVEMBER 22, 2019



Go to **extragive.org** on **November 22**

- 1 Bookmark our donation page:
www.extragive.org/organizations/schreiber-pediatric
- 2 Return to the page anytime on Nov. 22 (midnight gifts encouraged!)
- 3 Tell your friends and family to donate
- 4 Give at whatever level you are comfortable (\$10 minimum)

#helpschreiberkids

www.schreiberpediatric.org/palooza

**2020
SCHREIBERPALOOZA
MUSIC FEST**

SATURDAY, FEBRUARY 8
Clair Brothers, Manheim

Beat the winter blues at Schreiberpalooza

If you wanna DANCE WITH SOMEBODY...

If you need to FREAK OUT!

If you got some UPTOWN FUNK...

**BANDS
INCLUDE**

**NEW
DATE**

VINYL GROOV 3RD POWER FAMILY SOUL

For the first time... **THE USUAL SUSPECTS**

TICKETS ON SALE NOV. 15
\$20 in advance or online
\$25 at the door

Please join us at Schreiber for...

Annual Holiday Open House

Take pictures with a Sensitive Santa • Have fun with holiday arts & crafts
Enjoy caroling by our preschoolers • Sample light refreshments • Tour the Center
...And more!

**Wed.,
Dec. 11
6-8 p.m.**



**From the Desk of
James DeBord,
Schreiber President**

Together, we make Schreiber EXTRAORDINARY

**OUR
Extra Give
GOAL
this year:
\$100,000**

THE EXTRA GIVE™
ORDINARY
NOVEMBER 22, 2019 COMMUNITY Helping & Inspiring CHILDS

A year ago I was focused on several major projects to expand the services and physical space of Schreiber.

Then, early in the new year, I received some sobering personal health news. I've spent much of the past several months on a journey to find the best health care services to address my needs. That effort led me to Philadelphia.

While I was there for many doctor visits, various tests and ultimately my surgery and hospital stay, I spoke to several health care professionals who wanted

to know about Schreiber and our work. They would often ask me about the support we receive from the health systems in our service area.

They were curious about the philanthropy we receive for the outpatient pediatric therapy services we provide, services that help our Schreiber kiddos thrive and keep them out of their treatment and hospital rooms.

I had to be honest.

Occasionally, one of the region's hospital systems will take a small sponsorship for one of our special events. Otherwise, we don't receive any formal support from these systems. And we're the sole provider of these outpatient services for children and young adults in the entire region.

Not surprisingly, they were almost always stunned. "Mind-boggling" was a typical response.

So we do what we have done throughout our nearly 85 years. We raise the funds to make our own way. And we continue to provide the services that have helped generations of children who now walk, speak and live extraordinary lives as members of this community and many others.

Extraordinary. It's at the heart of the work we do, and this month, it's front and center in our efforts to raise money to support that work, in the form of the Extraordinary Give on Nov. 22.

As more and more children come to our doors – we set a new record every month — and Schreiber must partner with others to meet these needs, we remain as committed as ever to strengthening this incredible organization. Please join us in that effort during this year's Extra Give. **Our goal this year is ambitious: We're trying to reach \$100,000.**

With your help, we will do it. With your help, we can continue to provide our life-changing services.

Let's be extraordinary together.

Behavioral health services

**COMING
in MARCH
2020**

Schreiber will soon offer outpatient behavioral and mental health services to families in central Pennsylvania. We will be able to provide outpatient therapy for children and teens with a wide range of diagnoses, including autism.



Available services will include:

- One-on-one therapy
- Emphasis on health psychology, combining physical and mental health
- Play therapy and autplay therapy, along with other treatment modalities

Private insurance and Medical Assistance will be accepted.

For details, contact:

Kaity Sollenberger, LSW • 717-393-0425 ext. 180
ksollenberger@schreiberpediatric.org

2020 Special Events Calendar

FEBRUARY 8

Schreiberpalooza

MARCH 21

38th Annual Gala

APRIL 17–MAY 1

Buck-A-Cup

MAY 17-19

Phonathon

JUNE 5-7

38th Annual
Softball Weekend

SEPTEMBER 13

32nd Annual Rubber
Duckie Race & Festival



Schreiber Stories

A Q&A with Denisha Roberts



In May, Denisha Roberts took her second mission trip overseas with Brittany's Hope, a Lancaster County nonprofit that serves families and orphaned children, primarily in Vietnam and Africa. During her travels on this trip, Denisha worked with a 12-year-old boy named Quan. As we do in our therapy work here at Schreiber, Denisha's visit changed Quan's life. Read about the trip on the Schreiber Stories blog.

<http://www.schreiberpediatric.org/schreiber-stories>

Denisha Roberts (top left), a Schreiber physical therapist, with her friend Quan (at left and above).



To those who generously supported the Center recently...



Our 31st Annual Rubber Duckie Race & Festival™ Sept. 8

again raised more than \$115,000 for the kids and families of Schreiber. To everyone who supported Duckie this year, from our legion of duckie ticket sellers and faithful volunteers, to all who bought tickets and to all the generous sponsors, we thank you from the bottom of our hearts.

Our Ninth Annual Golf Classic returned to the beautiful course and ballroom at Bent Creek Country Club

Oct. 7, and because the rain held off for most of the afternoon, we raised nearly \$30,000 for the kids of Schreiber. Thanks to the work of **Chad Berger** and **Eileen Culp** and all the folks at **Faulkner Chevrolet Lancaster** who put in so much time to make the event a success. And thanks to our event sponsors and all the players who came out and played for a cause.



A special thank you...

To **Universal Athletic Club** and **Lancaster Craft Beerfest**, which raised money for us in August; and to the **Kiwanis Club of the Lititz Area** and the support it provides through the annual Chocolate Walk; and to **Wacker Brewing Co.**, for collecting money for us during two Trivia Tuesdays in October.

This kind of fundraising by outside groups amounts to more than **\$250,000 a year** for Schreiber, and every dollar makes a difference.

To start your Schreiber fundraiser, contact Erica Croce at 717-393-0425 ext. 105.

save the date

Respite Night

November 15 • 5:30 p.m.

Parents, drop the kids off at Schreiber and enjoy a relaxing night out. \$10 per child, \$5 for siblings. RSVP by Nov. 8 to Jen Bachman, jbachman@schreiberpediatric.org.



Schreiber Celebrity

Bartender Night

at Max's Eatery

November 20 • 5 p.m.

Come out to Max's, 38 W. King St., Lancaster, and be served by lead therapist Angie Rice, Schreiber board president Ryan Grube and longtime supporter Kristen Hottenstein. Max's will donate 100 percent of tips at the bar to Schreiber.

Club 625

December 2 • 4:30 p.m.

Annual Dinner and Holiday Shopping. Meet for dinner with friends and do a little holiday shopping for the family! Park City Mall, meet at TGI Fridays. \$35 to register. RSVP by Nov. 25 to Jay Graver, jgraver@schreiberpediatric.org.

Quiet Santa at Dutch Wonderland

December 1, 8, 15

Have a quiet photo session with Santa, courtesy of the folks at Dutch Wonderland. To register, contact Dan Fink, dfink@schreiberpediatric.org.

Holiday Open House

December 11 • 6 p.m.

See Schreiber decorated for the holidays. Enjoy crafts, music performances by our preschoolers and, of course, a quiet visit with Santa. FREE.

Staff Recognition

Employees of the Month AUGUST

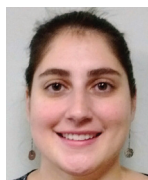


Camp Schreiber Staff

SEPTEMBER



Stacy Jones
Database
Coordinator



Susan Fisher
Volunteer
Coordinator

OCTOBER



Lisa Moore
Receptionist

New Employees



Ashley Shirk
Speech-Language
Pathologist



Maria Viscosi
Speech-Language
Pathologist

This Winter at Schreiber



QUIET SANTA at Dutch Wonderland

Schreiber and Dutch Wonderland will again team up to offer Schreiber families the chance to have holiday photos with Santa. Sign up for a time slot between 1 and 3 p.m. on Sunday, Dec. 1, 8 or 15. To be added to the list for your 15-minute session, contact Dan Fink at dfink@schreiberpediatric.org or at 717-393-0425 ext. 108.



Schreiber Board

Schreiber's Board of Directors named new officers for 2019-20. **Ryan Grube** was named the new board chairman for a two-year term, succeeding Brian Hartz. Ryan is a physical therapist at Drayer Physical Therapy Institute. **Phyllis Boyd** was named first vice chairwoman. Phyllis is a retired school administrator.



Ryan Grube

Cancellations

For your convenience, we are now accepting cancellations **by text message**. Please send a text message to the Scheduling Department at **717-617-8004** with the following information: date/time of appointment; your child's name; and the reason. Please provide 24 hours notice. **If your appointment is sooner, we ask that you please phone our Scheduling Department directly at 717-393-0425 ext. 132.**

Winter Weather Watch

Tune in to WGAL TV-8 for information about delays or closings at Schreiber. You can also visit our website or Facebook page for up-to-the-minute notices.



2019 Holiday Hours

Thanksgiving: **Closed Nov. 28 & Nov. 29**

Christmas: **Closed Dec. 24 & Dec. 25**

New Year's: **Closed Dec. 31 & Jan. 1**

We wish you and your family a happy and joyous holiday season.

yes I want to be a Schreiber STAR!

1. Visit www.schreiberpediatric.org/donate
2. Click on the **GREEN DONATE NOW** button
3. Choose the frequency of your gift
4. Hit **DONATE NOW**

I'd prefer to support Schreiber with my one-time gift:

☐ \$500 ☐ \$100 ☐ \$25 —or— ☐ \$_____

Any other amount you care to give to the children at Schreiber Center for Pediatric Development

Name _____

Address _____

City _____

State _____

Zip _____

Phone _____

Email *Provide your email to receive news about Schreiber programs*

Please mail this completed form with your gift to the address below or use the return envelope provided:

Schreiber Center for Pediatric Development, 625 Community Way, Lancaster, PA 17603

Your gift is tax-deductible as allowed by law.

WVC1119



A copy of the official registration and financial information may be obtained from the PA Department of State by calling toll free, 1-800-732-0999. Registration does not imply endorsement.



625 Community Way, Lancaster, PA 17603 • (717) 393-0425 PHONE • (717) 735-6009 FAX

E-mail: info@schreiberpediatric.org • www.schreiberpediatric.org